



2 Harris Court, Suite A-4  
 Monterey, CA 93940  
 U.S.A.

Tel: (831) 373-0701  
 Fax: (831) 373-0903  
 E-mail: Sales@laserdevices.com  
 Internet: www.laserdevices.com



Document P/N 1003  
 Rev. May 2005

Images copyright Laser Devices, Inc. 2000  
 Super Power Point Trademark of Laser Devices, Inc.



## USER'S MANUAL

### Laser Aiming Device ITAL AND OTAL Super Power Point (635nM) Infrared (835nM) NSN 1005-99-535-5506



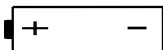


Made in the U.S.A.  
 U.S. Patent #5581898

- ITAL P/N19001(SPP)     OTAL P/N19101(SPP)  
 ITAL P/N19002(IR)     OTAL P/N19102(IR)

### Warranty

Laser Devices, Inc. (LDI), offers a one-year limited warranty (excluding batteries and light bulbs) from the date of original purchase against failure due to defect in design, parts and workmanship. The warranty is void if the product serial number has been removed or if the product has been misused, modified or abused. LDI will replace defective products at its discretion. To the maximum extent permitted by law, LDI disclaims all other warranties, whether expressed or implied, including but not limited to implied warranties of merchantability and fitness for a particular purpose. In no event shall LDI or its suppliers, distributors, dealers or agents be liable for any damages whatsoever (including without limitation damages for personal injury, wrongful death or pecuniary loss) arising out of the use or the inability to use any LDI manufactured product. This limited warranty gives the purchaser specific legal rights, which may vary by state and jurisdiction.

### Accessories and Parts (cont'd)

		<u>Part #</u>
	1.5 Volt AA Battery	30115
	Daytime Shooting Glasses, High Efficiency	30204
	Daytime Shooting Glasses, Standard Efficiency	30203
	Target "Accur-Aim Laser™" with 3 Strips	30102
	Target Strips (35 Pieces)	30143

### Warning Infrared Laser Light

This aiming laser emits laser light that has been determined to pose a risk of eye injury. In order to avoid the possibility of eye injuries resulting from direct viewing, please adhere to the following warnings:

- \* Never look directly into the laser beam.
- \* Do not look directly at the laser light using scopes, binoculars or night vision equipment.
- \* Avoid shining the laser onto mirrored surfaces.
- \* Observe all safety precautions with the laser that you would observe with a loaded firearm.
- \* Avoid extended activation, especially in rain, mist, fog, smoke or dusty conditions, as the laser beam can give away your position to the enemy.



### General Information

Please read these handling and safety instructions and the instructions for your weapon before attempting to install or use this laser aiming device. Failure to comply with the installation instructions may result in damage to your weapon.

### Safety First

Unload your firearm (remove the magazine and any cartridge in the chamber) prior to mounting the laser on your weapon. Please familiarize yourself with the location of the activation switch and pressure pad switch for the laser. Make sure the laser and the firearm are pointed in a safe direction prior to attaching the laser to the weapon.

- Activate the IR laser in a momentary fashion to avoid detection by enemy forces equipped with night vision goggles.
- Using the IR laser in rain, fog and mist may increase the possibility that the enemy will detect your position.

## Notes

## Table of Contents

1	Operating Instructions	18
2	Operation Under Extreme Conditions	19-20
3	Replacement of Batteries	21
3	Removing the Laser	22
4	User Maintenance	23-24
5	Troubleshooting the Laser	25-26
7	Service & Repair	27
8-13	Accessories and Parts	28-30
14-15	Export Control	31
16-17	Warranty	32

Warning Infrared Laser Light

Laser and Firearm Safety

General Information

Safety First

Product Description

Laser Technical Data

Location of Major Parts

Installation of the Laser

Zeroing the Laser

Adjusting Windage/Elevation

## Laser and Firearms Safety

**ALWAYS** keep the gun and aiming laser pointed in a safe direction.

**ALWAYS** be sure the gun is safe to operate and the barrel is clear of any

obstruction.

**ALWAYS** know your target and what is beyond it.

**ALWAYS** wear eye and ear protection when shooting.

**ALWAYS** store your aiming laser, firearm and ammunition so they are secure

and not accessible to unauthorized persons.

**ALWAYS** treat every gun as if it were loaded.

**NEVER** direct an aiming laser at a mirrored surface.

**NEVER** look into an IR aiming laser to determine whether it is activated.

**NEVER** look directly into the laser light using night vision goggles, optical

scopes, telescopes or binoculars.

2

## Product Description

The ITAL and OTAL are compact, waterproof aiming devices manufactured to meet the unique requirements of military special operations teams. The systems are waterproof to 30 meters. The ITAL and OTAL systems mount on any standard NATO 1913 rail. The low profile design is intended to mount in front of most optical scopes. The lasers are fully adjustable for windage and elevation for precise alignment at a variety of ranges.

The ITAL laser is in line with the center line of the barrel, and is used on flat top rifles or when the laser is mounted in front of the front blade sight.

OTAL features an offset laser for use behind the front sight of the weapon.

4

## Accessories and Parts (cont'd)

70710	Momentary Pressure Switch Right Angle Connector with 15 cm Connector
70712	Momentary Pressure Switch Right Angle Connector with 20 cm Connector
70713	Momentary Pressure Switch Right Angle Connector with 25 cm Connector
70711	Momentary Pressure Switch Straight Connector with 15 cm Connector
70714	Momentary Pressure Switch Straight Connector with 20 cm Connector
70715	Momentary Pressure Switch Straight Connector with 25 cm Connector
21113	6 Volt Tac/Light Assembly with 1" Ring
14155	9 Volt Tac/Light Assembly with 1" Ring

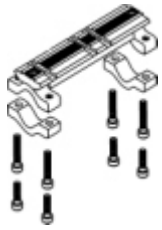
31

Purchaser agrees to abide by all laws and regulations relating to the sale of the device, including any license required by the U.S. Department of State or U.S. Department of Commerce prior to export. Purchaser also agrees to abide by all laws, rules and regulations in effect in the jurisdiction where the product will be used.

29

## Accessories and Parts

### Mounting Rails:



	LDI Part #
Picatinny/Weaver Mount for AK-47	24568
Picatinny/Weaver Mount, Long (85.34mm) for 11.4mm to 19mm	24449
Picatinny/Weaver Mount, Long (85.3mm) for 19mm to 25.4mm	24453
Picatinny/Weaver Mount, Short (56.64mm) for 11.4mm to 19mm	24447
Picatinny/Weaver Mount, Short (56.64mm) for 19mm to 25.4mm	24448

28

## Troubleshooting the Laser (cont'd)

4. If laser is impossible to Zero, please check the following:
  - a. If the windage or elevation adjustment screw is at its maximum limit or is getting difficult to turn, check that the mounting bracket is properly aligned with the weapon barrel.
  - b. If the impact point appears to move, confirm that the mounting bracket is firmly attached to the weapon. Also check to make sure that the laser is firmly attached to the weapon so that it does not move under recoil forces. If you suspect that the mount is moving, tighten the mounting screw. Also tighten the thumb nut securing the laser to the mounting bracket using a screwdriver or coin.
4. If the aiming laser still fails to operate, please contact LDI for assistance.

26

## User Maintenance (cont'd)

If it is ever necessary to clean the LAD, rinse with fresh water and dry with a clean cloth. If it is necessary to clean the front cap (Part #03159) blow dust or debris off of the lens. If necessary, rinse the lens with fresh water and then use lens paper, lens cleaner or a cotton swab to clean the lens. Do not use gun oil or harsh chemicals to clean the front cap, as they may dissolve the silicone seal and damage the laser.

If the battery needs to be replaced, see the section on battery replacement.

**Remove the battery to prevent the possibility of corrosion if the LAD is going to be stored for an extended period of time (e.g., more than a week or two).**

24

## Laser Technical Data

Laser Class	Class IIIb for infrared
Optical Output	3.5mw or less
Beam Diameter	0.58 cm <sup>2</sup> at 25m
Range	450m (visibility may depend on the generation of NVG)
Environment	Waterproof to 30 meters
Material	Anodized aircraft aluminum 6061T-6
Color	Flat black
Length	8.12 cm
Width	4.16 cm
Weight	140 grams (including battery)
Height	2.82 cm without mount (3.75 cm with mount)
Battery	1.5 AA
Battery Life	5 hours continuous use
Lens	Coated glass lens
Diode Life	10,000 hours

5

## Location of Major Parts (See Figure 1)

Item	Description	Part No.
1.	Laser Housing	3491
2.	End Cover Assembly	A03458
3.	Indicator Knob	021-1125
4.	Battery Cap Assembly	A03672
5.	Optical Reducer Assembly	A04143
6.	Windage and Elevation Assembly (x2)	A03455
7.	Cable with Pressure Pad Assembly (see accessories for options)	A03466
8.	1.5 Volt Alkaline Battery (optional Lithium battery, not shown)	B30115
9.	Case Assembly Screws (Phillips head) (x2)	C01097
10.	Crossbar Stud (Picatinny mount)	3282
11.	Compression Spring for Mount	0-109
12.	Rail Crossbar Alignment Stud Short	3102
13.	Clamp for Weaver Base	3101
14.	Thumb Nut Knurled	3114
15.	Grommet for Battery Compartment	263
16.	Battery Installation Label	NA
17.	Danger Label (not shown)	NA
18.	Front Cap Assembly	A03991
19.	Battery Cap O-Ring	C00094

7

## Installation of the Laser (cont'd)

**Step 3.** Installation of optional barrel mount (Part No. 24447 or 24448).

Locate the position on the barrel where you wish to locate the laser aiming device. Attach the bottom brackets using the supplied hex screws. Tighten the bottom brackets firmly (see Figure 3).

Check the alignment of the NATO 1913 rail to confirm that it is located in the correct position. If necessary, loosen the mounting screws and rotate the mounting rail into the correct position.

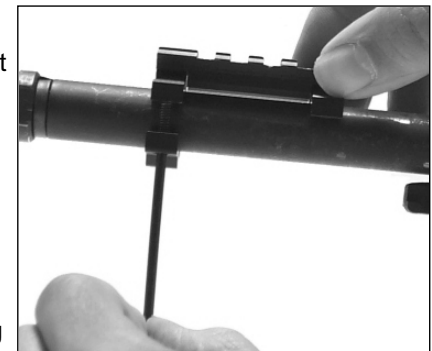


Figure 3

9

- Installation of the Laser (cont'd)**
- Step 4.** Loosen the rail grabber knob so that the base will fit over the rail and the crossbars fit the cutouts in the rail. Move the LAD forward or backward until both crossbars are seated in a rail cutout (see Figure 4).
- Step 5.** Tighten the thumb screw until it is tight. Use a coin or a screwdriver to firmly tighten so the LAD is securely mounted on the weapon.
- Step 6.** Plug the pressure pad switch remote cable into the connector port on the back of the unit (see Figure 5). Rotate the locking ring on the pressure pad switch in a clockwise direction to lock the remote cable into place (see Figure 6).
- Step 7.** Locate the position on the foregrip for mounting the pressure pad switch. Peel the backing off of the velcro and attach the pressure pad to your weapon (see Figures 7 & 8).

- User Maintenance**
- The LAD does not require any particular maintenance when used under normal conditions other than changing the battery and occasionally cleaning the unit. Prior to use the user should check the following:
- Test activation.
  - Make sure remote cable is attached.
  - Make sure the adaptor rail is firmly attached to weapon.
  - Confirm that the rail clamp is tight.
  - Check the sight alignment by test firing the weapon or by using the manufacturer's optional laser borelight (LDI Part #FA3160-635).

- Installation of the Laser**
- Step 1.** Confirm that your weapon is unloaded.
- Step 2.** If the weapon does not have a built-in NATO 1913 rail, install an optional NATO 1913 rail (see Figure 2). Suitable mounting locations include:
- Above the barrel
  - Below the barrel
  - Behind the front sight (OTAL only)
  - Flat top rifle or on a built-in rail adapter system

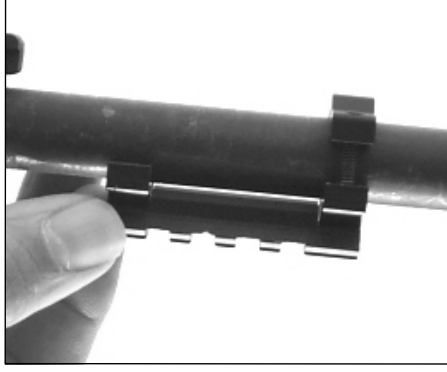


Figure 2

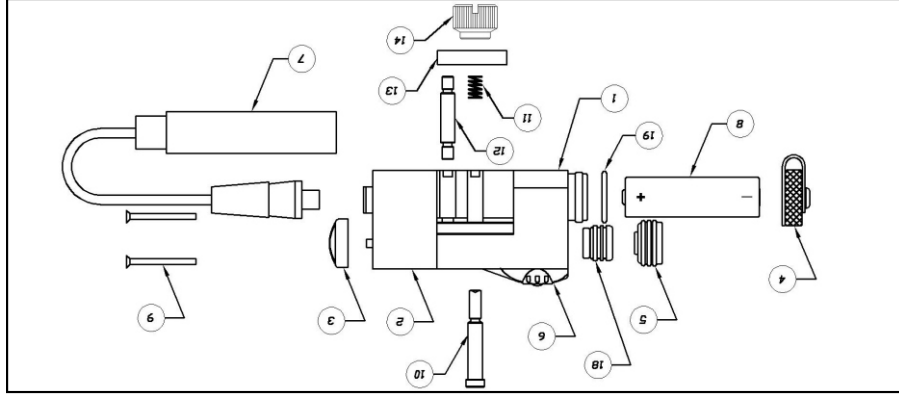


Figure 1

**Service & Repair**

This aiming laser was manufactured to provide years of rugged and dependable use. In the event the laser ever needs internal repair, please contact LDI or its European Service Center for a return authorization number. Once you obtain the return authorization number, package the product securely and return it postage paid to your service center. In the event the product is not covered by the warranty, you will be notified as to the nature and the cost of the necessary repair.

**USA: Laser Devices, Inc**  
 2 Harris Court, A-4  
 Monterey, CA 93940 USA  
 Tel: (831) 373-0701  
 Fax: (831) 373-0903  
 Email: Sales@laserdevices.com

**Europe: Technik Partner GmbH**  
 Herrenlandsrasse 72  
 D-78315 Radolfzell, GERMANY  
 Tel: (0049) 0 77 32 / 98 80 75  
 Fax: (0049) 077 32 / 56 53 8  
 Email: LDI-Service@technik-partner.com



Figure 12

### Removing the Laser

- Step 1.** Confirm that your weapon is unloaded.
- Step 2.** Loosen the rail clamp knob. Use a screwdriver if necessary. Remove the laser from the rail. **If the laser is going to be stored for a period of time, remove the batteries.**
- Step 3.** Remove optional NATO 1913 rail if necessary.

### Operation Under Extreme Conditions (cont'd)

**Dust and Sand Storms:** Minimize activation of the LAD, as the laser light may give away your position. Keep laser stored in pack unless needed. If necessary, clean laser front cap as described in maintenance section.

**High Altitude Operation.** No special procedures required.

**To clear dry dust or sand from the front cap, blow the dirt off the lens. If the lens mists up or becomes wet, use a clean cloth, lens cleaner or lens paper to clean the front cap.**

### Operating Instructions

Once the laser has been properly mounted on the weapon and properly adjusted for windage and elevation, the LAD is ready to use. Prepare the LAD for operation by turning the rotary switch from the OFF position to the ON/Momentary position. In combat or when on patrol, operate the laser using the Momentary remote switch. **REMEMBER, NIGHT VISION EQUIPMENT IS REQUIRED TO VIEW THE IR LASER POINT ON THE TARGET. If you accidentally activate the IR laser, you may reveal your position to opposing forces using night vision equipment.**

**Avoid prolonged activation of the aiming laser in mist, fog, smoke, dust, high humidity, snow or rain conditions, as the laser beam may reveal your position to the opposing forces.**

When the laser is not being used, remember to turn the rotary switch back to the OFF position to prevent accidental activation. If the laser is to be stored for a long period, remove the batteries.

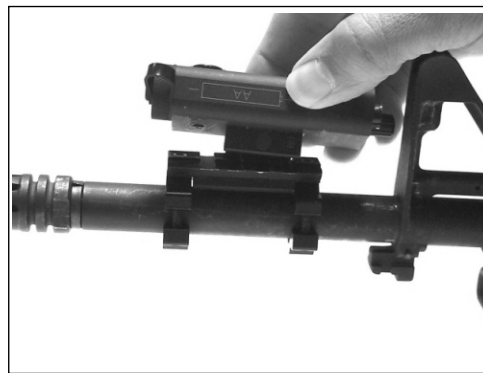


Figure 4



Figure 5



Figure 7



Figure 8

### Zeroing the Laser (cont'd)

**Step 3.** Confirm that your weapon is unloaded.

**Step 4.** Adjust the windage or elevation by turning the windage or elevation knob by no more than one-quarter (1/4) turn. **Windage:** Turning the windage knob clockwise will move the laser point to the right, and turning the knob counter-clockwise will move it to the left. **Elevation:** Turning the elevation knob clockwise will move the laser point down, and turning it counter-clockwise will move it up. **Always move the laser point towards the bullet holes on the target**

**Step 5.** Test fire the weapon again to check the new alignment. If necessary, repeat the alignment process from Step 1. above.

## Installation of the Laser (cont'd)

**Step 8.** Attach the remote cable retainer clip to the wire. Peel the backing off and attach to the foregrip.

**Step 9.** Test the laser for proper operation by turning the rotary switch into the Momentary position and depress the pressure pad switch. Use night vision goggles to view the laser point on the target.

**Step 10.** Zero the unit for windage and elevation (see section on Zeroing the Laser).

12



Figure 6

## Zeroing the Laser

In order to precisely align the laser to your weapon or to change the alignment for use at other distances, follow the steps below:

**Step 1.** Aim the weapon using the laser aiming device at the target using a sandbag or steady rest. Place the laser point on the center of the target and carefully fire three rounds from the weapon and check the target for the impact point. Use night vision goggles to view the IR laser point.

**Step 2.** If the bullet holes are clustered to one side or the other, then you will need to adjust the windage (see Figure 9 & 10). If the bullet holes are grouped above or below the target, then you will need to adjust the elevation (see Figure 11).

14

## Adjusting Windage/Elevation

Always adjust the windage and elevation knobs in one-quarter (1/4) turn increments or less. Move the laser towards the bullet holes in the target. Do not overadjust the windage or elevation, as it may damage the laser.

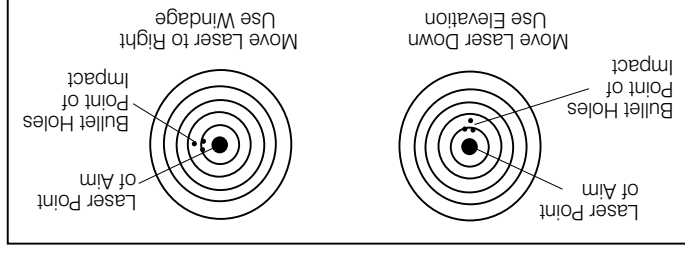


Figure 9

16

## Operation Under Extreme Conditions

**Extreme Heat.** No special procedures required.

**Extreme Cold.** Extreme cold will reduce battery life. For use in temperatures below -20°C or -5°F store alkaline batteries in an inner pocket. For operation in extremely low temperatures use optional lithium AA batteries.

**Salt Air.** No special procedures required.

**Water, Mud, Snow.** Confirm that the battery cap is firmly tightened. If the front cap has been loosened or replaced, confirm that it is also tight. Use the switch connector plug to seal the switch opening. Clean the LAD after use with fresh water and wipe dry with a clean cloth. If LAD front cap requires cleaning, see the section on user maintenance.

19

## Replacement of Batteries

ITAL and OTAL use a single AA battery that will provide about 5 hours of continuous operation depending on temperature. When the laser light dims the battery needs to be changed. Follow the steps below to replace the battery.

**Step 1.** Confirm that your weapon is unloaded.

**Step 2.** Remove the battery cap on the front of the unit (turn counter-clockwise).

**Step 3.** Remove the depleted battery. If necessary, remove the laser from the weapon.

**Step 4.** Reinstall the new battery with the negative (-) terminal facing out of the housing (see Figures 1 & 12).

**Step 5.** Screw the battery cap back on to the laser housing. Test the laser to confirm proper battery installation. (Use night vision goggles to view the IR beam). If the laser was removed from the mount, confirm that the laser point is still properly aligned for windage and elevation.

21



Figure 10



Figure 11

17